

**A Novel Integrated Solution  
to Nutrient Monitoring  
The Next Generation in Water Quality  
Monitoring and Watershed  
Management**

**William A. Telliard –U.S. Environmental Protection Agency, retired**

**Roger Stewart –Virginia Department of Environmental Quality**

**Dr. Cary B. Jackson –Hach Company**

# Goals and Objectives

Evaluation of a side stream nutrient water quality monitoring panel for long-term deployment in tributary streams to the Chesapeake Bay.

Develop real-time nutrient loadings and stream assessments.



**Richmond Times-Dispatch**

October 31, 2011

**State says computer model for bay cleanup has problems**

# Stream Selection

*Rational :*

Infrastructure Presence

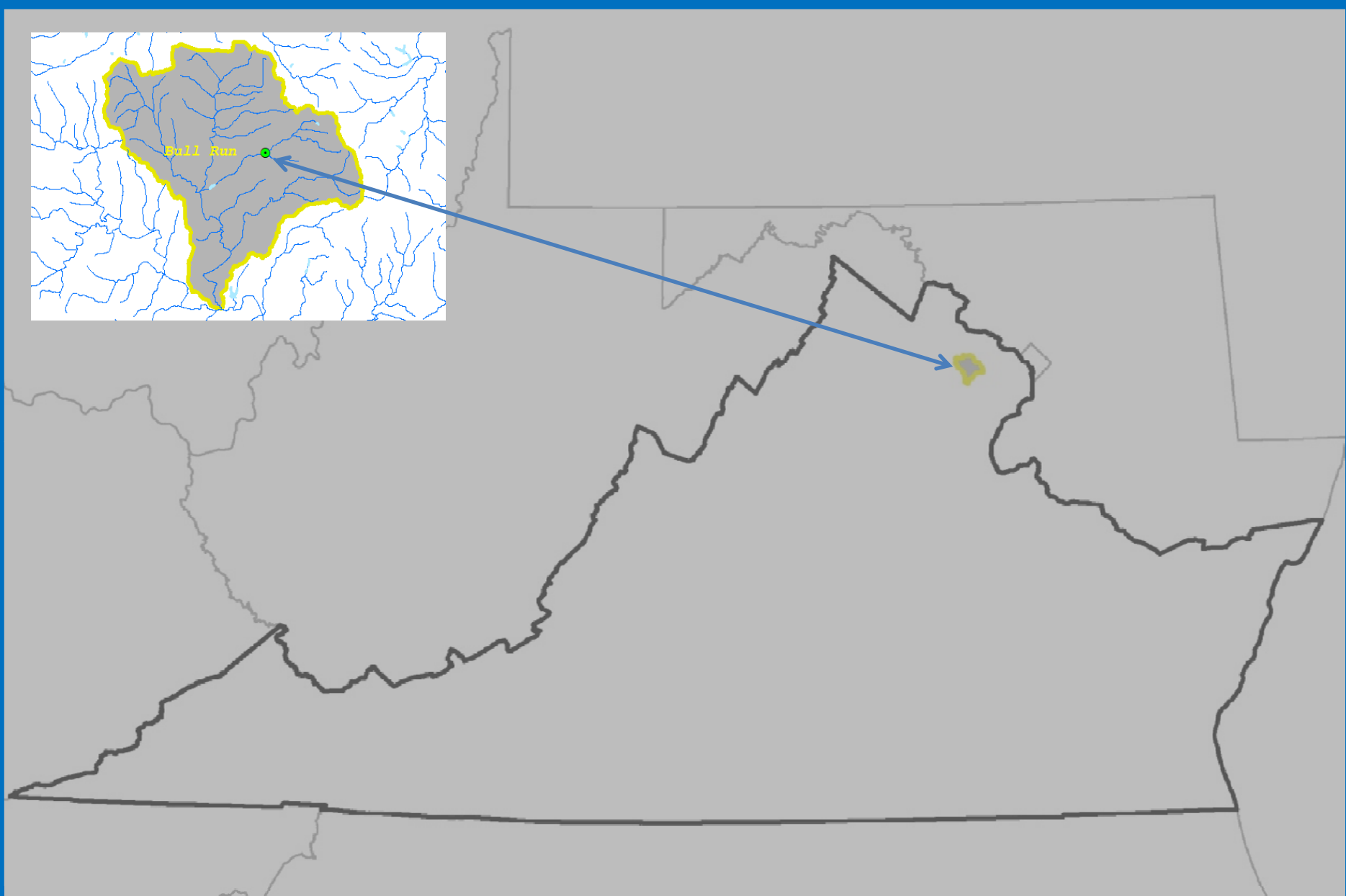
Close to the greater Washington, DC area

Known nutrient presence

Flatlick Branch above Frog Branch at

Chantilly, Virginia

USGS Gage Station 01656903



Bull Run watershed tributary to the Chesapeake Bay











# Water Quality Parameter Selection for Stream Deployment

pH – Continuous

Conductivity - Continuous

Temperature -Continuous

Turbidity - Continuous

Nitrite/Nitrate - Continuous

Luminescence Dissolved Oxygen - Continuous

Ortho-phosphate – Continual, every 5 – 15 minutes

# Nutrient Water Quality Monitoring Panel

Nitratax Probe –NO<sub>2</sub>/NO<sub>3</sub>

Solatax–Turbidity/Suspended Solids

Hydrogen Ion Activity Probe –pH

Conductivity Probe –Specific Conductance

Luminescence Dissolved Oxygen Probe–DO

Temperature Probe









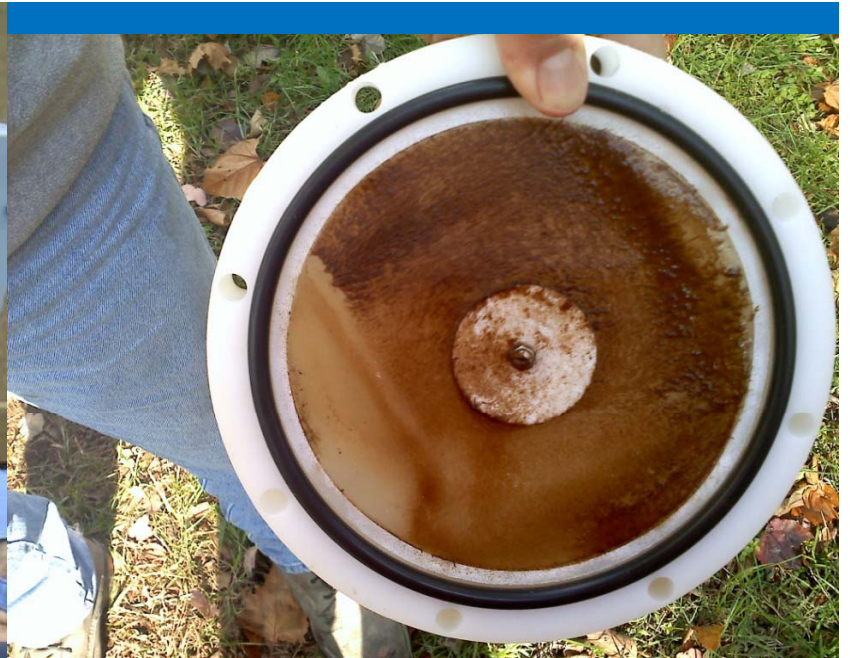






**Manifold and Pre-filter to Phosphax Analyzer**





**Pre-filter and 0.2 um Teflon filter to Phosmax Analyzer**







# Submersible Pump





# Submersible Pump instream installation







# Calibrating Side-stream Sensors





# Event Monitor 1.1.0.106

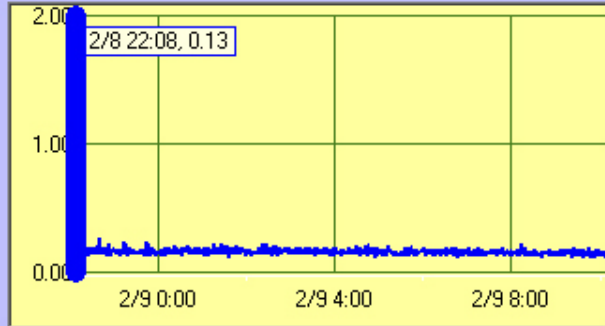
Site: WDMpsc Panel 2  
Current User: hach  
Role: Commissioner

02-09-2007 10:08:38

Logout

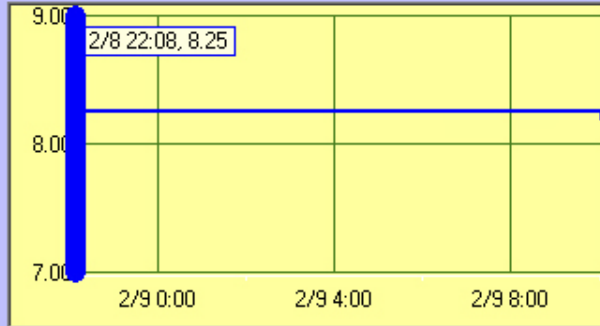
Turbidity

0.16 NTU



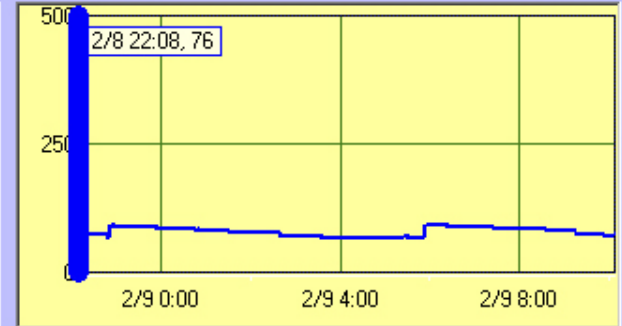
pH

8.19



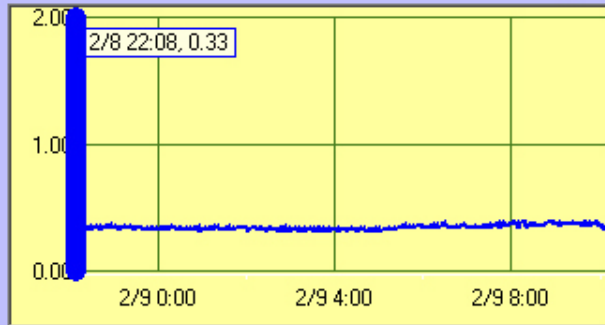
Conductivity

72  $\mu$ S/cm



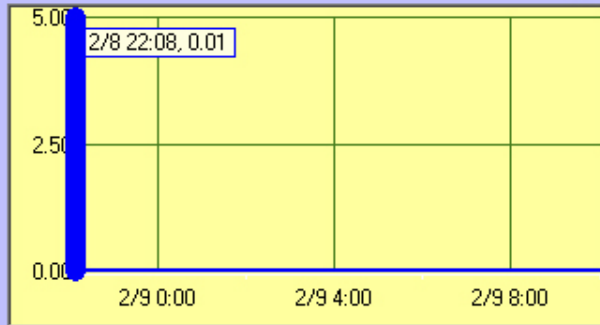
Chlorine

0.32 ppm



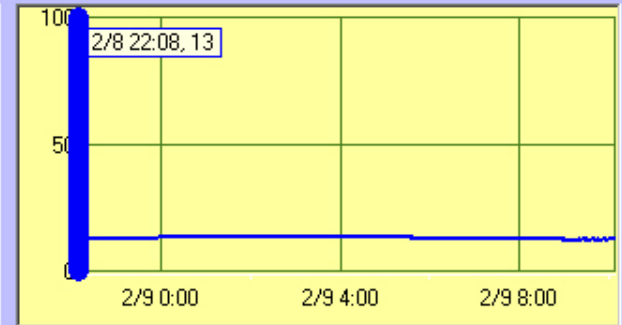
TOC

0.01 mg/L



Temperature

12.25 deg C



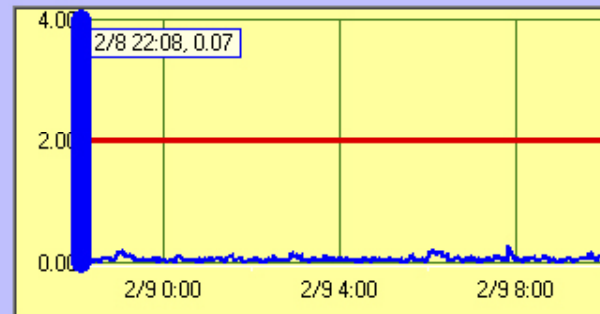
Graphs

CONFIGURATION

MAINTENANCE

Trigger

0.19



AGENT

PLANT

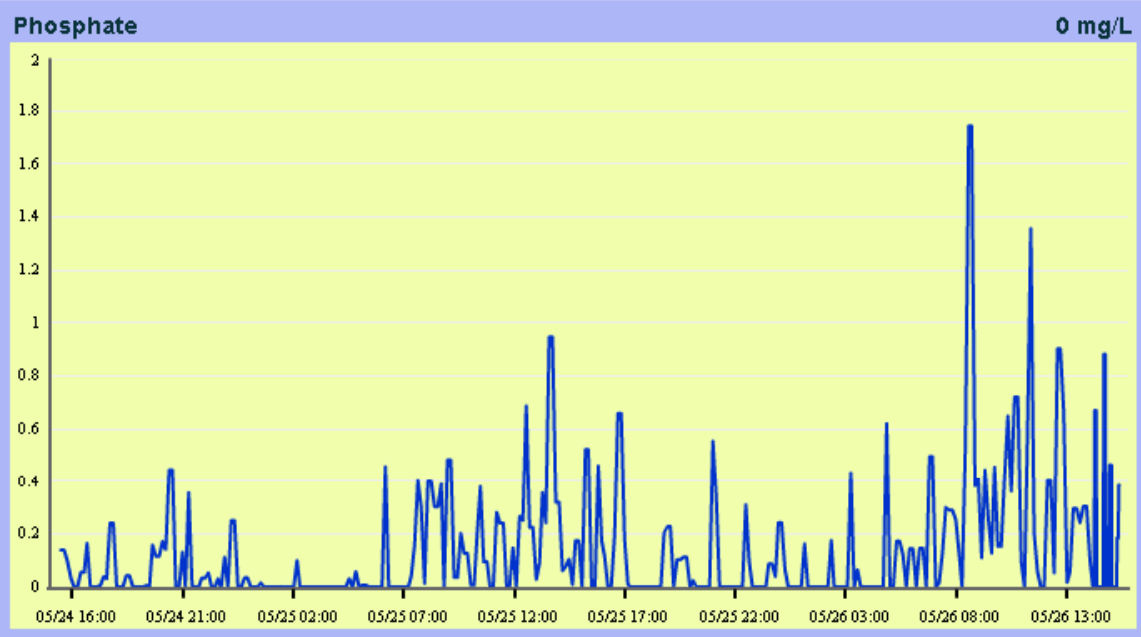
SYSTEM

SENSORS



Site: Nutrient Water Panel  
User: hach  
Role: Superintendent

05-26-2011 15:29:45  
Version: 1.5.1  
logout

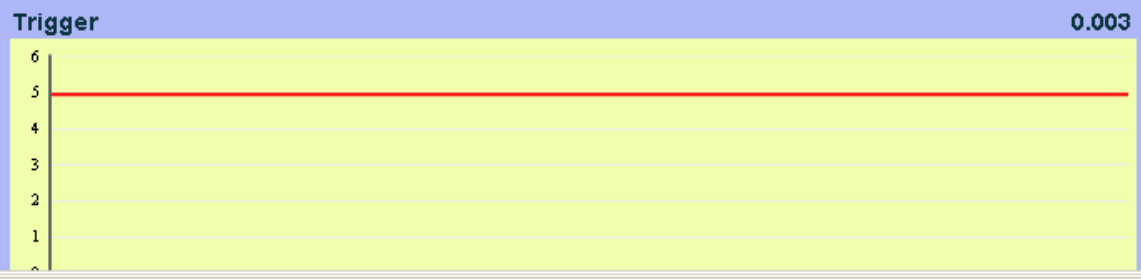


Alarm High: 15  
Alarm Low: 0

Sensor Type	Value
Trigger	0.003
pH	7.203
Conductivity	458.255
Temperature	22.956
NITRATE	1.089
SOLITAX	2.226
Phosphate	0
LDO	8.4

Back

Markers Graph Settings X-Axis 48 Hours 02/25/2011 05/26/2011 Live



PLANT

SYSTEM

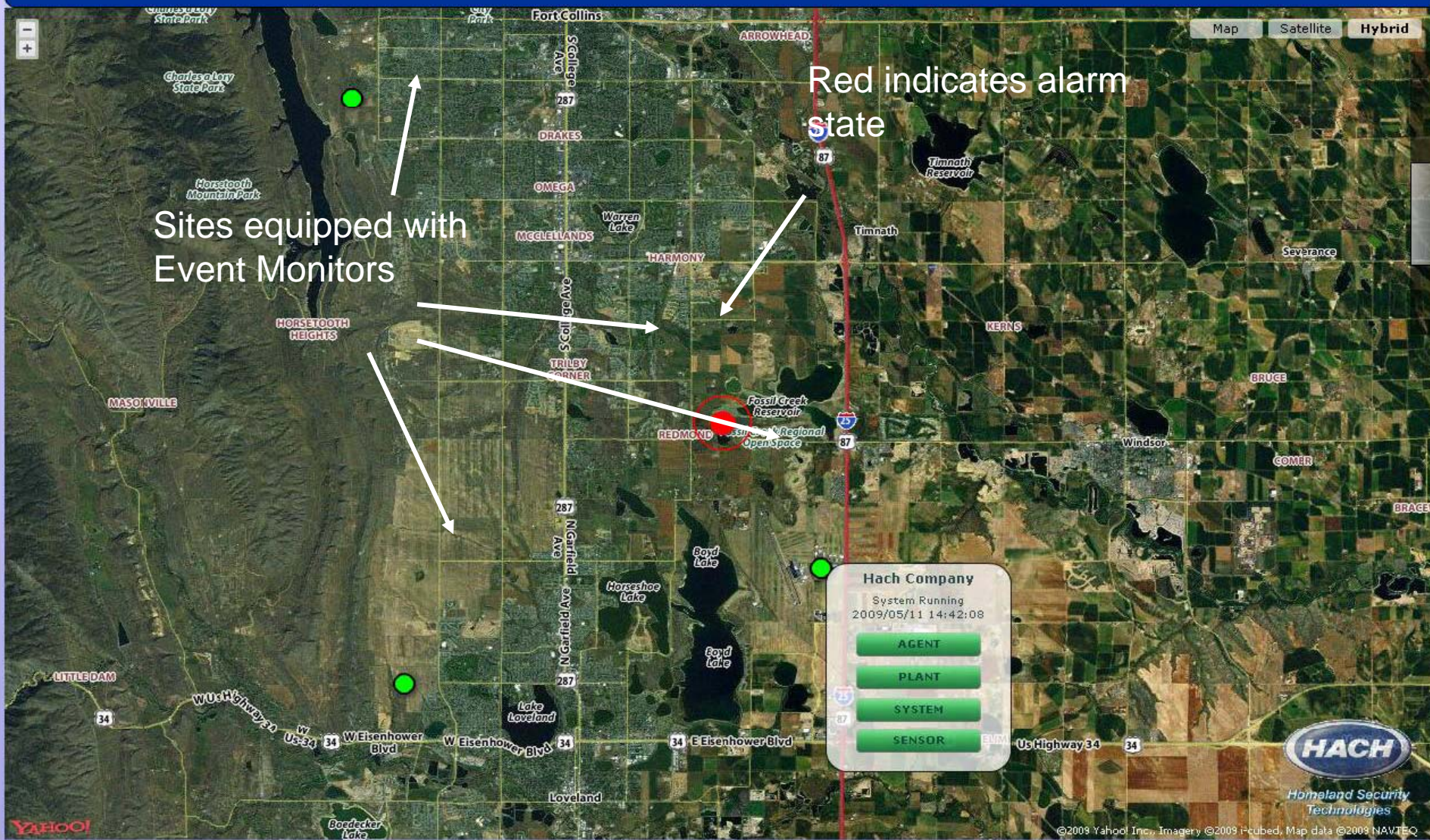
SENSOR MISSING



# CITY GUARD™

City: Loveland

User:



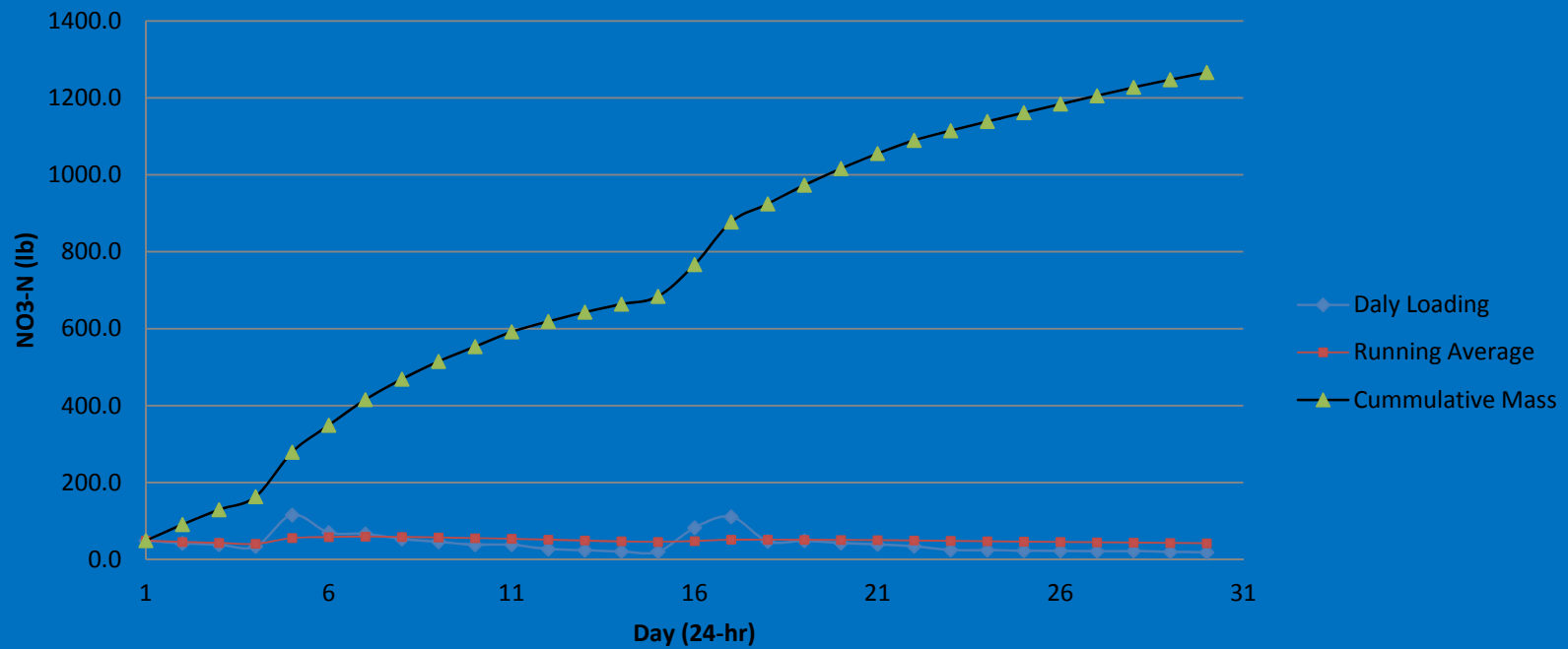




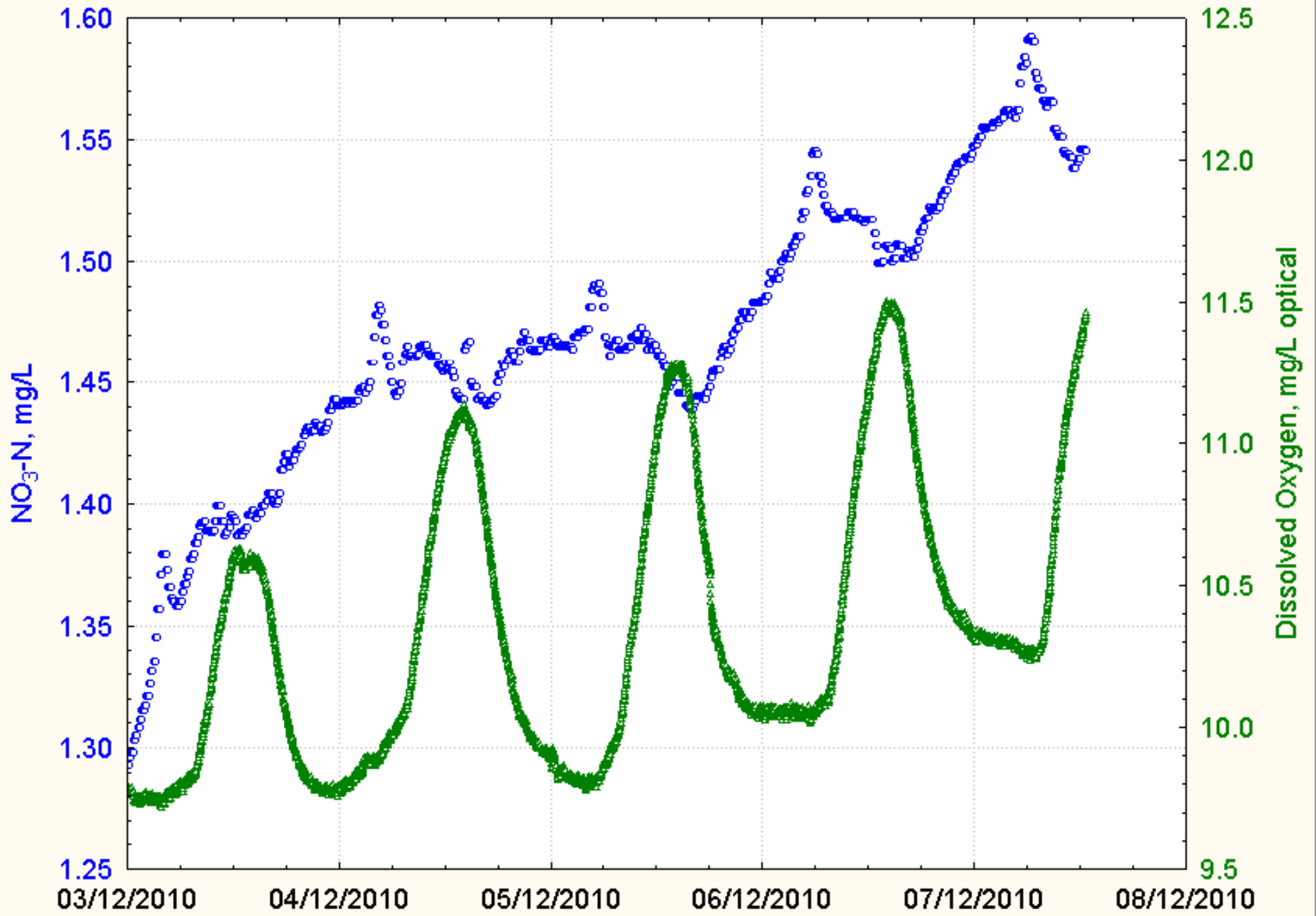
View and compare multiple sites

# Data Processing

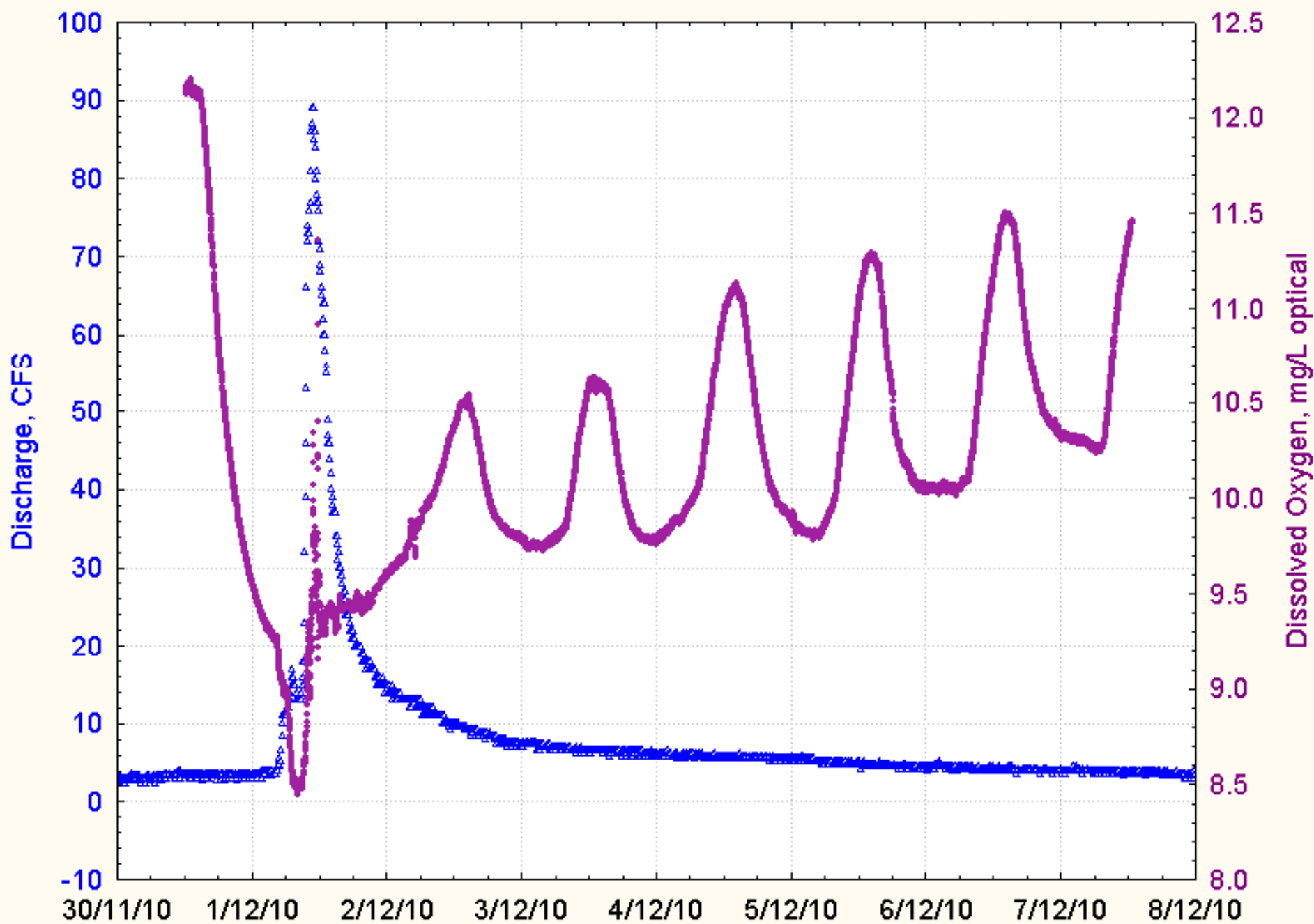
Flatlick Branch at USGS Gage Station 01656903  
Chantilly, Virginia NO<sub>3</sub>-N Loading



01656903 FLATLICK BRANCH ABOVE FROG BRANCH AT CHANTILLY, VA

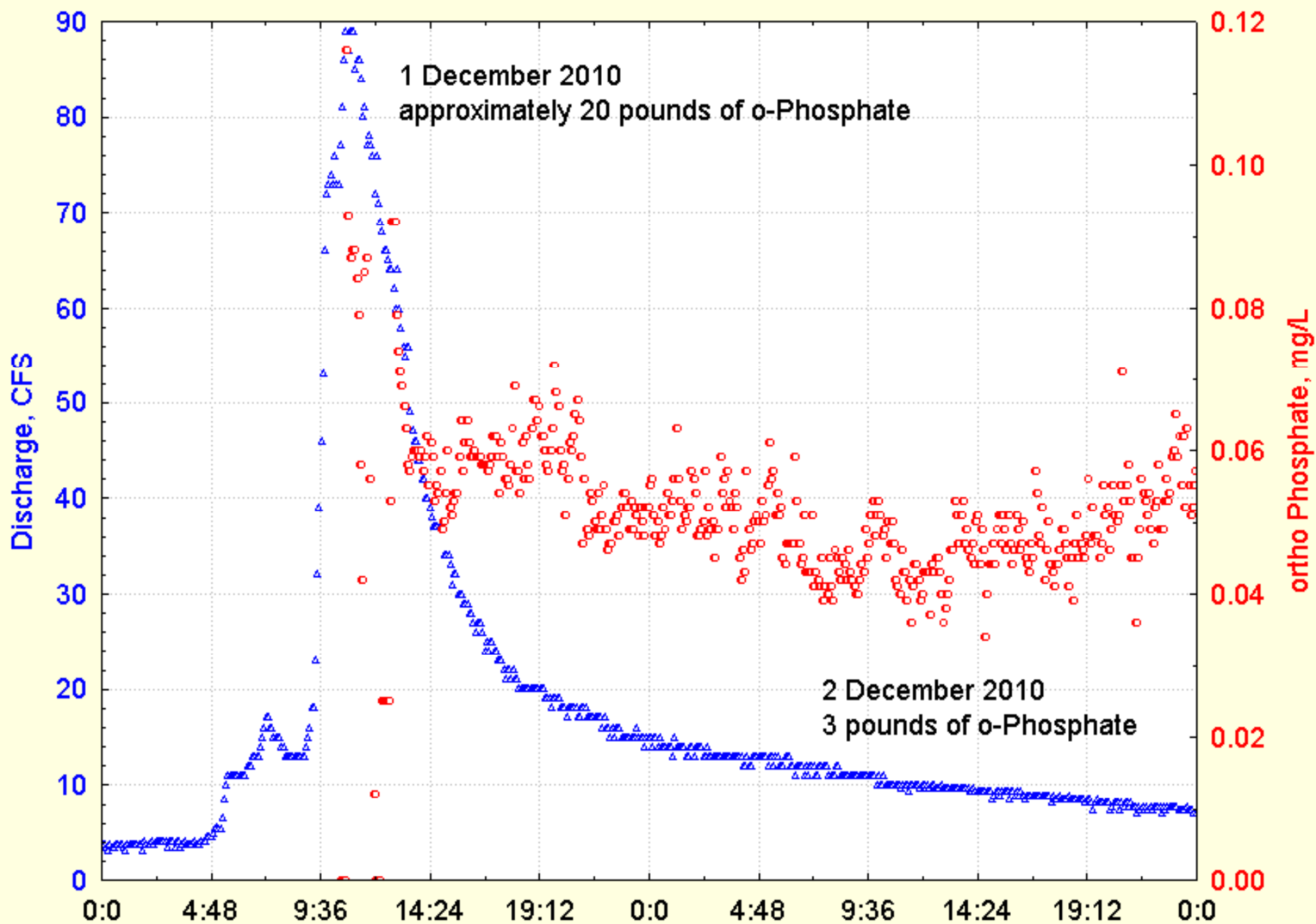


01656903 FLATLICK BRANCH ABOVE FROG BRANCH AT CHANTILLY, VA





01656903 FLATLICK BRANCH ABOVE FROG BRANCH AT CHANTILLY, VA





**INTERNATIONAL**

*Standards Worldwide*

**Online sensor workshop  
Coco Beach Florida  
January 21, 2013**



Questions?